



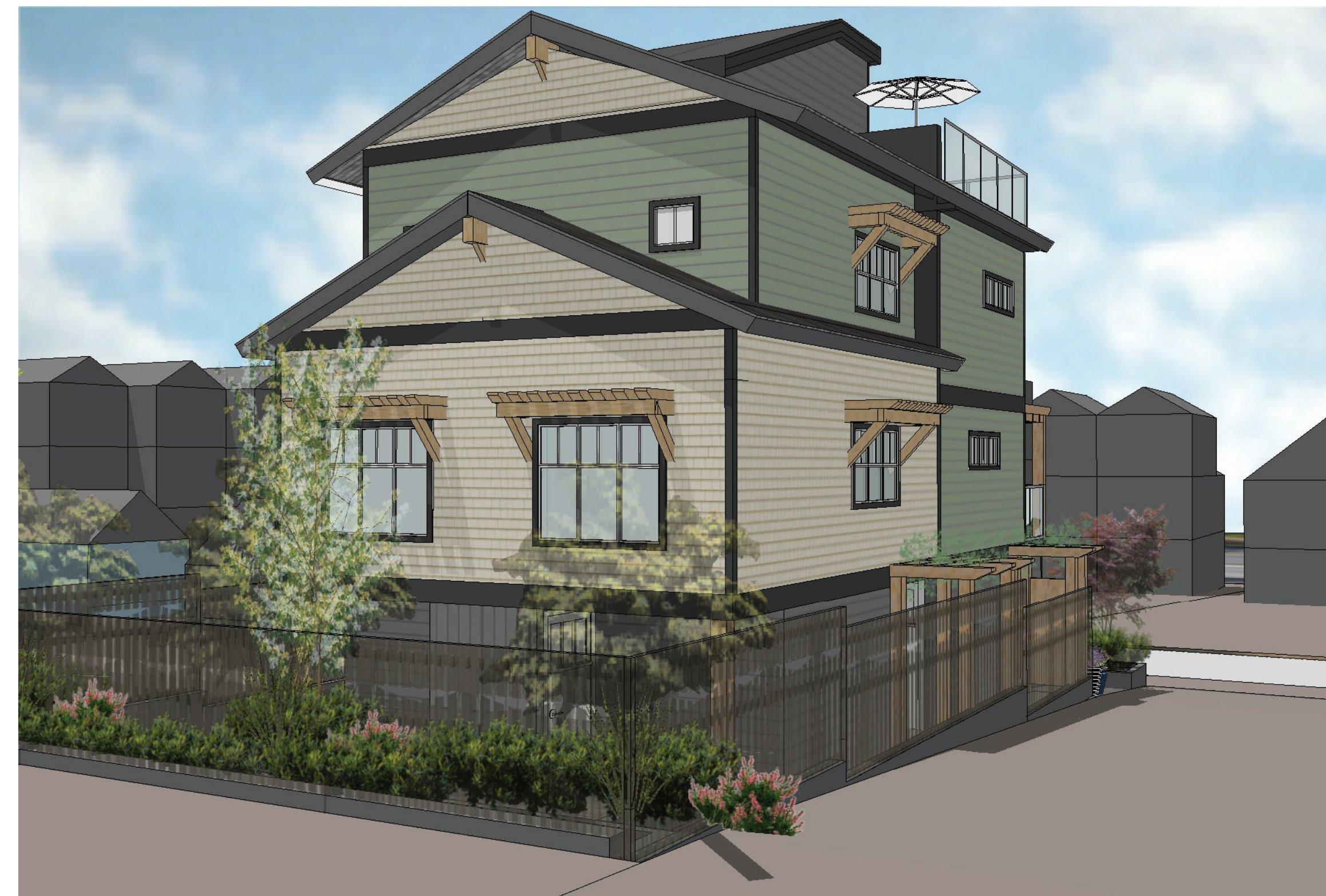
PERSPECTIVE FRONT VIEW FROM LANE (WEST)



PERSPECTIVE FRONT VIEW FROM LANE (EAST)



PERSPECTIVE VIEW OF ENTRANCE



PERSPECTIVE VIEW FROM THE REAR OF SITE

RECEIVED  
DP 1243  
2021-SEP-07  
Current Planning



**JOYCE REID TROOST ARCHITECTURE**  
2515 GLENAYR DRIVE  
NANAIMO, BC V9S 3R9  
  
joyce@jrtarchitecture.com  
250.714.8749  
jrtarchitecture.com

THE DRAWINGS, DESIGN IDEAS AND FEATURES OF CONSTRUCTION DEPICTED HEREIN ARE THE EXCLUSIVE PROPERTY OF JOYCE REID TROOST ARCHITECT. ALL COMMON-COPY AND PROPERTY RIGHTS ARE EXPRESSLY RESERVED. THEY ARE NOT TO BE REUSED, COPIED, REPRODUCED, OR USED FOR ANY PURPOSES NOR ARE THEY TO BE ASSIGNED TO A THIRD PARTY WITHOUT EXPRESS WRITTEN CONSENT. IN THE EVENT OF ANY UNAUTHORIZED USE OF THESE PLANS BY A THIRD PARTY, THE THIRD PARTY SHALL NOT HOLD JOYCE REID TROOST ARCHITECT RESPONSIBLE.

ARCH. STAMP



**520 KENNEDY**  
520 KENNEDY STREET, NANAIMO, BC

CLIENT

Sun Porch Homes Ltd.

REV. DATE	NUMBER	DESCRIPTION
21-0715	01	DP DRAFT
21-0831	02	DP

DATE JUNE 24, 2021

SCALE SEE DRAWING

DRAWN BY JRT DRAWN BY JRT

PERSPECTIVES

**A300**